



PUTTERILLS

est. 1992



£1,300 Per Month
Bridge Court

Welwyn Garden City, AL7 1GY

PROPERTY SUMMARY

This immaculately maintained two-bedroom apartment on the second floor offers contemporary living in a prime location. Recently modernised, the apartment boasts a harmonious blend of style and comfort, making it an ideal choice for renters seeking quality accommodation.

Key Features:

- Two Bedrooms: Well-proportioned and designed to be bright and airy.
- Bathroom: A modern bathroom equipped with essential amenities.
- Lounge Diner: Spacious and inviting, perfect for both relaxing and dining.
- Fitted Kitchen: A contemporary kitchen fully equipped for culinary adventures.

External Features:

- Communal Grounds: Well-maintained shared spaces, enhancing the living experience.
- Parking: Includes an allocated parking space plus additional visitor parking, ensuring convenience for residents and guests

2

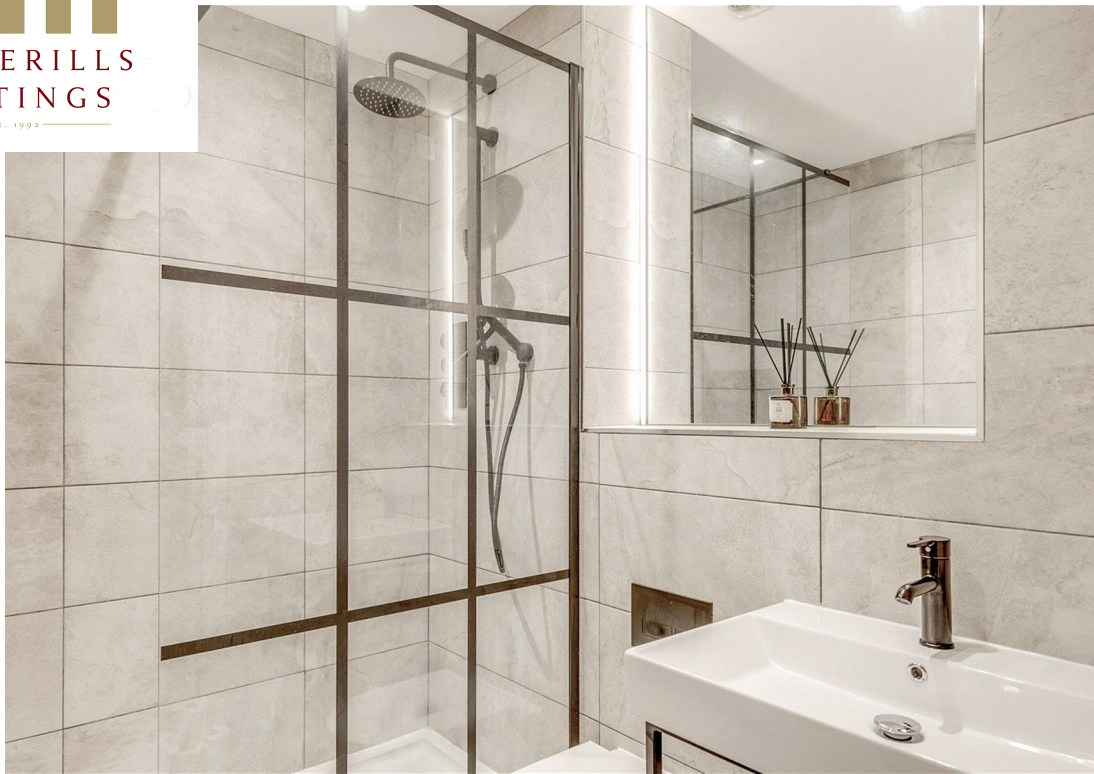


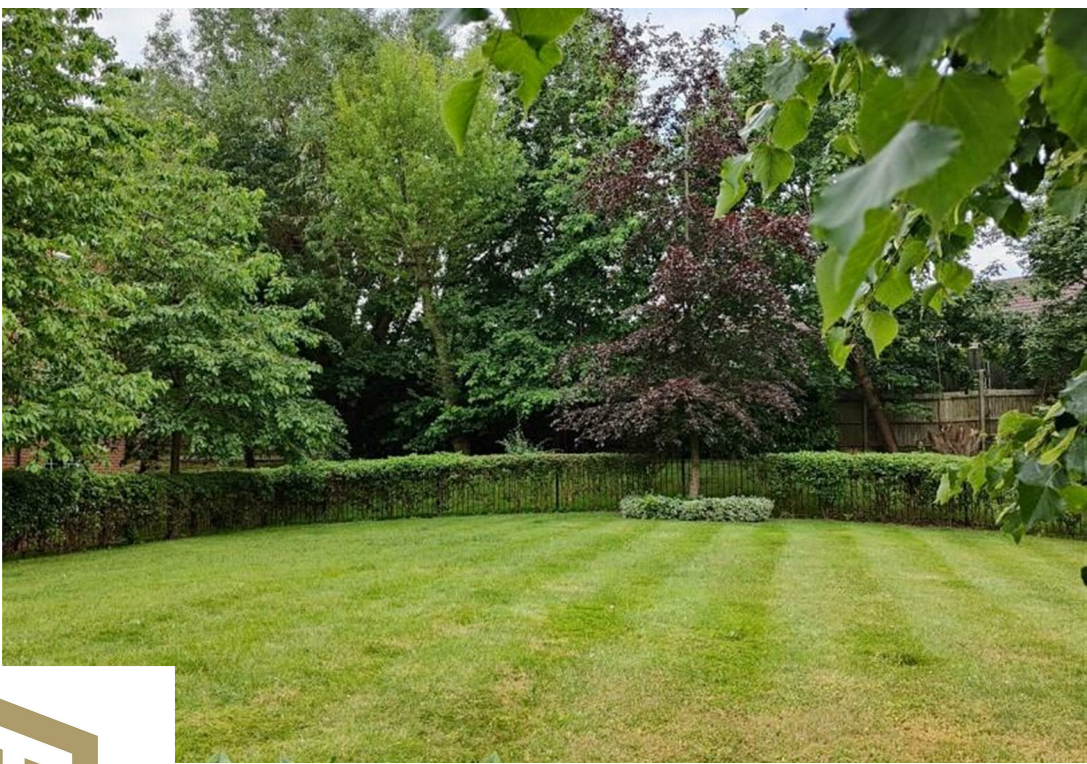
1



1







Bridge Court, AL7

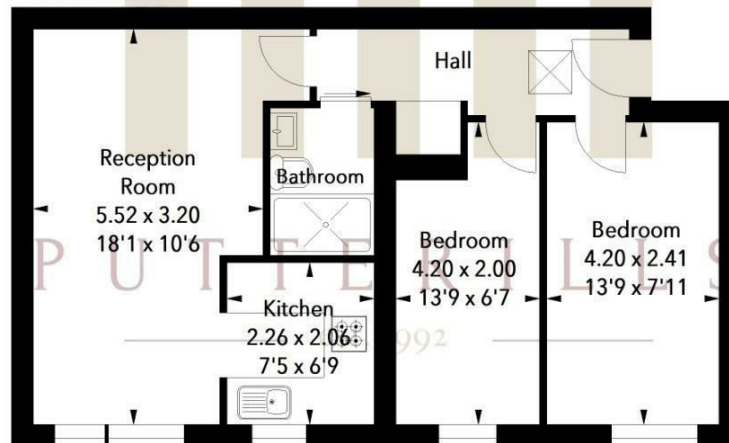


Illustration For Identification Purposes Only.
All measurements and areas are approximate, not to scale.
© Orange Tree Photography

LOCAL AUTHORITY

Welwyn

TENURE

COUNCIL TAX BAND

C

VIEWINGS

By prior appointment only

Energy Efficiency Rating		
	Current	Potential
Very energy efficient - lower running costs		
(92 plus) A		
(81-91) B		
(69-80) C		
(55-68) D		
(39-54) E		
(21-38) F		
(1-20) G		
Not energy efficient - higher running costs		
England & Wales		EU Directive 2002/91/EC

Agents Note: Whilst every care has been taken to prepare these particulars, they are for guidance purposes only. All measurements are approximate and are for general guidance purposes only and whilst every care has been taken to ensure their accuracy, they should not be relied upon and potential buyers/tenants are advised to recheck the measurements



OFFICE ADDRESS

Hill House 1 St Albans Road
Codicote
SG4 8UT

OFFICE DETAILS

01462 419333
lettings@putterills.co.uk
www.putterills.co.uk